

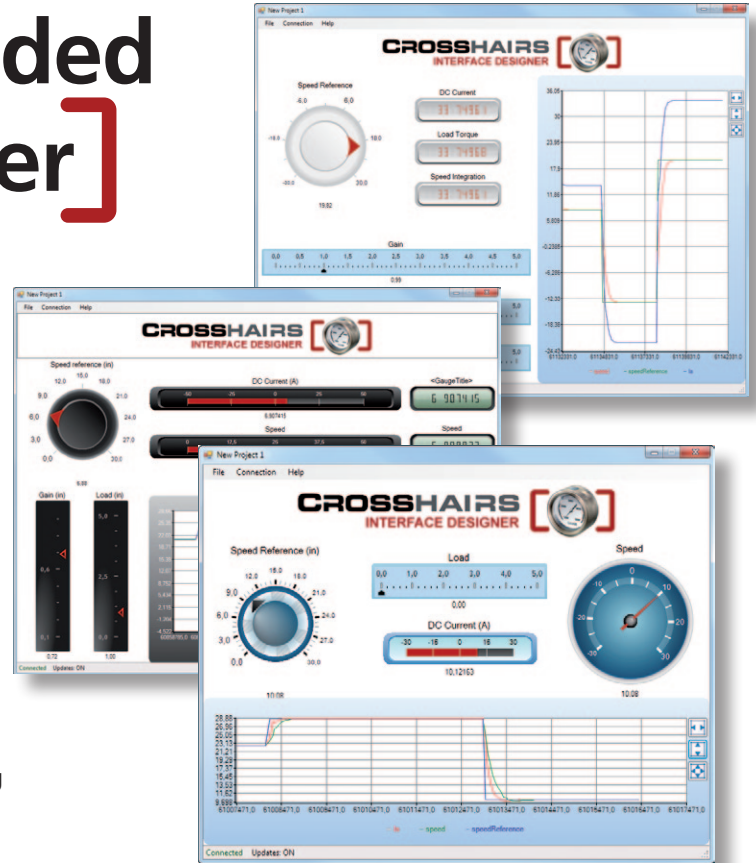
# CROSSHAIRS [ EMBEDDED ]

Invaluable [insight] through precise software solutions

## Crosshairs Embedded [Interface Designer]

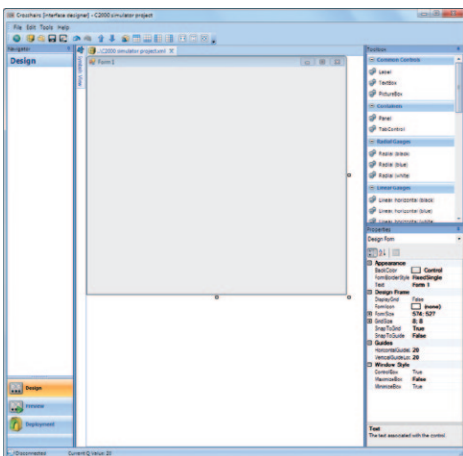
The Crosshairs Embedded Interface Designer is the latest innovative tool based on our OS/device independent engine. Easy to use, it helps you design the clearest, most helpful graphical user interfaces to monitor and control your embedded systems.

The Crosshairs Embedded Interface Designer provides simple yet flexible and effective tools for designing the interface of monitor and control systems for various parameters of target embedded systems. The variety of options available with Interface Designer ensures users can easily create appropriate, logical displays that allow all critical aspects of an embedded system's performance to be assimilated quickly and accurately. Interface Designer shares its intuitive graphical interface with our Functional Debugger, allowing users to switch easily between the two applications.



### Design module

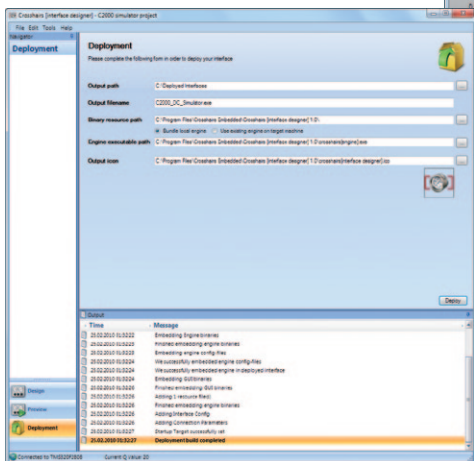
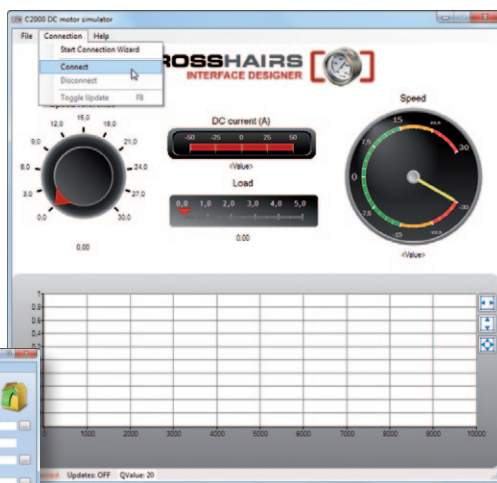
- No-code, drag-and-drop design of high quality, interactive and scalable graphical interfaces.
- Rich selection of interface components, ranging from vector-graphic components such as gauges and displays, to graphs and video feeds.
- Custom editor for user gauge design and customization.
- Interfaces can be easily branded with company logos.
- Drag-and-drop association of variables to graphical components.
- Per-component adjustable update frequency, default 200ms as per industry standard.



## Deployment module

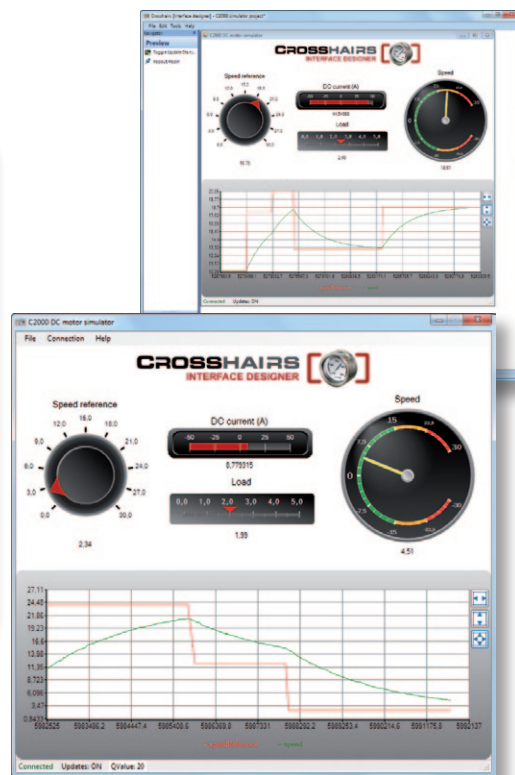
- One-click deployment of designed interface as compact standalone package.
- No dependency on embedded application image, all required symbol information encrypted in deployed package.
- Connection parameters are configurable from deployed interface.
- No dependency on other Crosshairs Embedded software or other third-party software.

- All binaries are compressed and obfuscated to protect deployed interface and associated data.
- Core libraries only reside in memory, never on disk.
- Powerful licensing model for customer-designed and deployed interfaces.



## Preview module

- Fully functional preview of finished interface using live connection to local or remote target.
- Test your designed interface before you deploy to end users.



## Great, customizable tool

The Interface Designer enables customers of C2000 based products to literally turn any knob this processor supports. Great, customizable tool accelerating ease of use and time to market.

**Matthias Poppel, Director Embedded Processing EMEA**  
Texas Instruments